



CANTERBURY POTTERS ASSOCIATION

EXHIBITION

CANTERBURY MUSEUM

GUEST ARTIST & EXHIBITOR : JO HOWARD VISITORS LOUNGE

4-14 NOVEMBER
2010

GUEST SELECTOR

Jo Howard

GUEST SPEAKER

Frederika Ernten

EXHIBITION COMMITTEE

Terry Gallie - CPA President

Susan Higgs

Margaret Ryley

Kim Henderson

Leanne Lassman

PHOTOGRAPHY

Michael Michaels

EXHIBITION DESIGNERS

Pip Trumic

Anu Pratap

Susan Higgs

CATALOGUE & POSTER DESIGN

Leanne Lassman

Thanks to all the volunteers who gave their time generously to help receive pots, select them, pack them, transport them, assist with exhibition set up, catering and photography. Without you we wouldn't have an exhibition.

To view online after opening night please visit www.nzpotters.com

SALES

Opening night sales procedures

No work will be sold until Terry Gallie, President of the Canterbury Potters' Association, has declared the exhibition open.

On each exhibition stand are small white sales cards, which bear numbers corresponding to the works on that stand. To purchase a work, remove the corresponding white sales card, write your name and address on the front and take it to the Sales Desk where your purchase will be recorded.

Please do not remove any sales cards until the exhibition has been declared open.

Note: Raku and pit fired work is not intended for holding liquids.

COLLECTION OF WORK

Work will be available for collection from the Museum on Sunday 14 November, between 4pm and 5.30pm or Monday 15 November between 9am and 11am. All items are to be fully paid for before or at the time of collection (as above dates). Work not collected at this time can be picked up by arrangement only, from the CPA Clubrooms. Please keep the sales card as proof of purchase and present it when you collect your work

JO HOWARD

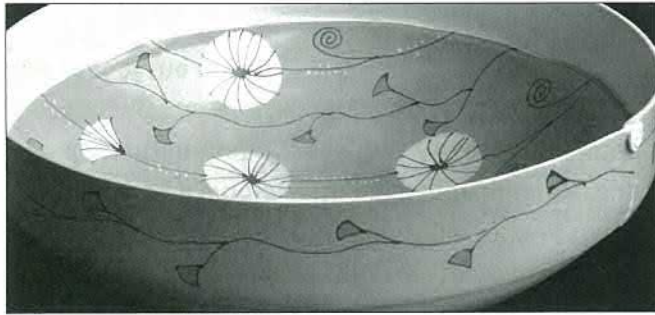
Despite what must have been very challenging times for a lot of people, the members of the Canterbury Potters Association have managed to submit a strong collection of work.

There were a number of criteria I used to decide what to include. I was mindful of the look of the exhibition as a whole, with each individuals group of work within that. Pieces that were not included were those that I felt diminished or distracted from the rest of the group.

I was looking for well crafted pieces, with a strong attention to detail and finish.

Finally, I selected according to my personal taste. Just as potters each have an individual approach to clay, no two judges selection would be alike.

It has been a great pleasure to select the annual exhibition of Canterbury Potters Association. I wish you all well in your future adventures with clay.

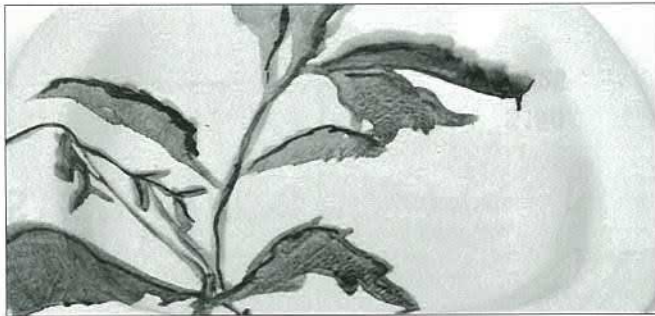


JO HOWARD

A	Green Bowl	\$360
B	Diamond Bowl	\$320
C	Jug 1/4	\$60
D	Jug 2/4	\$60
E	Jug 3/4	\$60

F	Jug 4/4	\$60
G	Windmill Bowl 1/4	\$45
H	Windmill Bowl 2/4	\$45
I	Windmill Bowl 3/4	\$45
J	Windmill Bowl 4/4	\$45
K	Cobalt Blue Bowl 1/4	\$120
L	Cobalt Blue Bowl 2/4	\$120
M	Cobalt Blue Bowl 3/4	\$120
N	Cobalt Blue Bowl 4/4	\$120
O	Pale Blue Bowl 1/6	\$40
P	Pale Blue Bowl 2/6	\$40
Q	Pale Blue Bowl 3/6	\$40
R	Pale Blue Bowl 4/6	\$40
S	Pale Blue Bowl 5/6	\$40
T	Pale Blue Bowl 6/6	\$40

U	Blossom Vase 1/2	\$120
V	Blossom Vase 2/2	\$120
W	Stitching Vase	\$45
X	Blossom Bowl 1/8	\$40
Y	Blossom Bowl 2/8	\$40
Z	Blossom Bowl 3/8	\$40
AA	Blossom Bowl 4/8	\$40
BB	Blossom Bowl 5/8	\$40
CC	Blossom Bowl 6/8	\$40
DD	Blossom Bowl 7/8	\$40
EE	Blossom Bowl 8/8	\$40
FF	Plate	\$90



JULIE BARTLETT

1a	Platter	\$145
----	---------	-------



ANDREW CARRAN

1	Nest of the Venomous Mud Wasp	\$50
2	Nest of the Venomous Mud Wasp	\$60



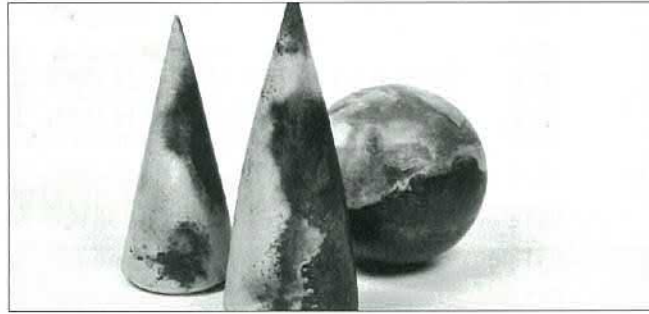
SALLY CONNOLLY

3	Greener Grows the Grass	\$250
4	Greener Grows the Grass	\$90
5	Greener Grows the Grass	\$90
6	Greener Grows the Grass	\$90



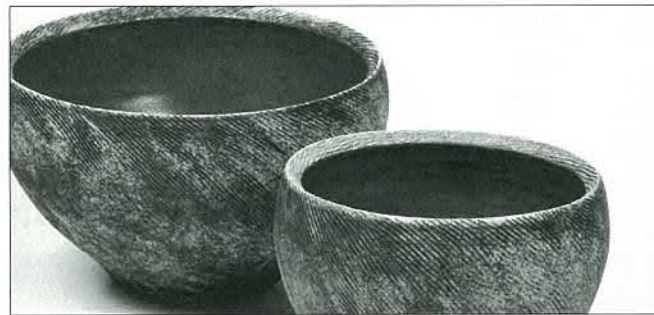
STEVE DENCH

- | | |
|--------------------|-------|
| 7 Plumbers Mate #7 | \$150 |
| 8 Jug | \$325 |



FREDERIKA ERNSTEN

- | | | | |
|-------------------|-------|--------------|-------|
| 9 Pit Fired Pot | \$240 | 13 Large Pot | \$800 |
| 10 Pit Fired Cone | \$38 | 14 Bowl | \$240 |
| 11 Pit Fired Ball | \$140 | 15 Bowl | \$82 |
| 12 Pit Fired Cone | \$80 | 16 Bowl | \$82 |



TERRY GALLIE

- | | |
|------------------|------|
| 17 Stone & Water | \$35 |
| 18 Stone & Water | \$45 |
| 19 Fire & Stone | \$35 |
| 20 Fire & Stone | \$55 |
| 21 Fire & Stone | \$75 |



KIM HENDERSON

- | | | | |
|-------------------------------------|-------|------------------|------|
| 22 Treescape - set of 3 | \$85 | 27 Leaf Litter 3 | \$25 |
| 23 Offerings to the Gods Chalice I | \$65 | 28 Leaf Litter 4 | \$25 |
| 24 Offerings to the Gods Chalice II | \$65 | 29 Nurture I | \$65 |
| 25 Forage | \$110 | 30 Ripen I | \$65 |
| 26 Harvest cups - set of 3 | \$95 | 31 Burst I | \$65 |



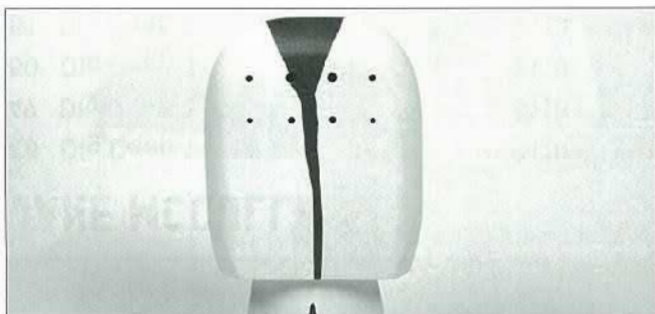
NEIL HEY

- | | |
|----------------------------------|-------|
| 32 Taza small | \$21 |
| 33 Taza small | \$21 |
| 34 Taza medium | \$30 |
| 35 Taza large | \$115 |
| 36 The Amazing Technicolour Bowl | \$390 |



SUSAN HIGGS

- | | |
|-------------------|---------|
| 41 Getting A Head | \$1,200 |
|-------------------|---------|



JAMES HORGAN

- | | |
|----------------------------|-------|
| 42 Untitled 1 - Large Form | \$600 |
| 43 Untitled 2 - Small Form | \$450 |



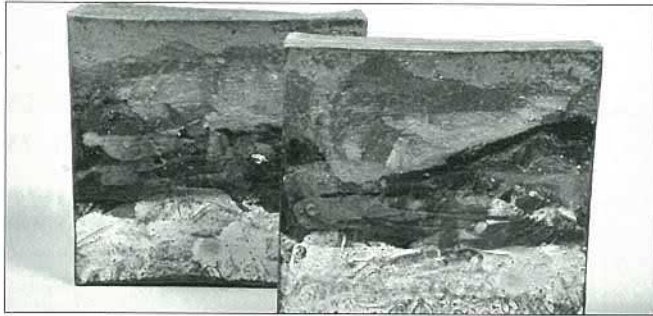
SARAH JOLLY

- | | |
|------------------|-------|
| 44 Untitled 1 | \$110 |
| 45 Untitled 2 | \$75 |
| 46 Set of 6 Cups | \$90 |



MARY KOH

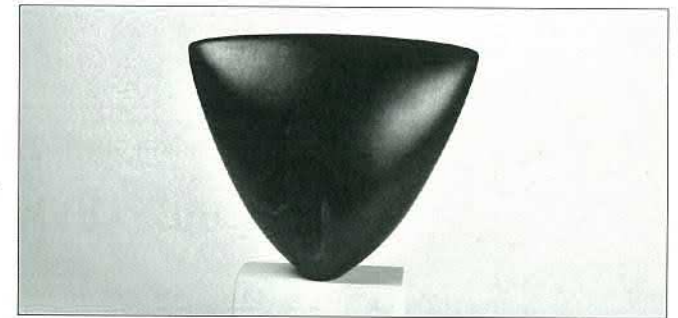
- | | |
|---------------------|------|
| 47 Cone Inspiration | \$95 |
|---------------------|------|



JANE MCCULLA

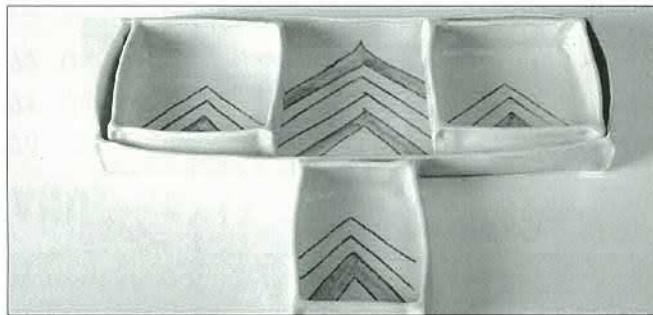
48 Dig Deep 1	\$110
49 Dig Deep 2	\$110
50 Dig Deep 3	\$110
51 Dig Deep 4	\$110
52 Dig Deep 5	\$110

53 Panorama Tread 1	\$95
54 Panorama Tread 2	\$95
55 Panorama Tread 3	\$95
56 Panorama Tread 4	\$95
57 Panorama Tread 5	\$95



MICHAEL MICHAELS

58 Cycladic Head	\$1,500
------------------	---------



HAWWA MOORE

59 Group of 4 Dishes	\$160
60 Group of 2 Dishes	\$70
61 Rectangular Dish	\$60



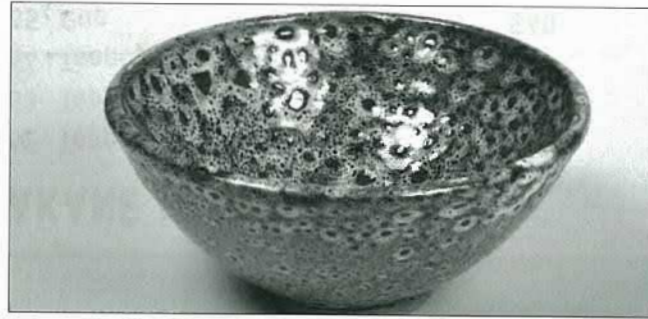
AKANE NAKAO

62 Teapot Set	\$190	66 Cup	\$40
63 Teapot Set	\$140	67 Cup	\$30
64 Teapot	\$90	68 Cup	\$30
65 Cup	\$40	69 Lidded Jar	\$60



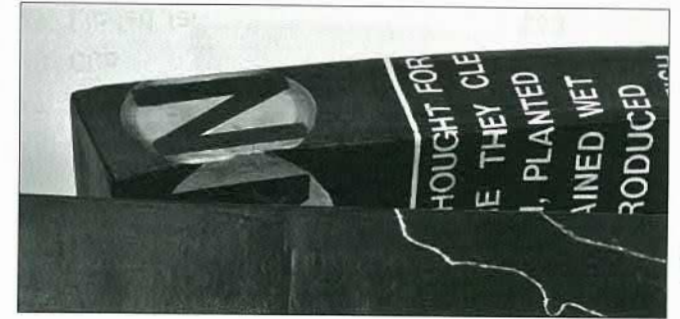
ANU PRATAP

70	Untitled II	\$200
71	Untitled III	\$125
72	Untitled IV	\$100



ALEX PRENTICE

73	Sweet Bowl	\$60
73a	Curved Form with Balls	\$60
74	Spinning Pot	\$60
75	Spinning Pot	\$60



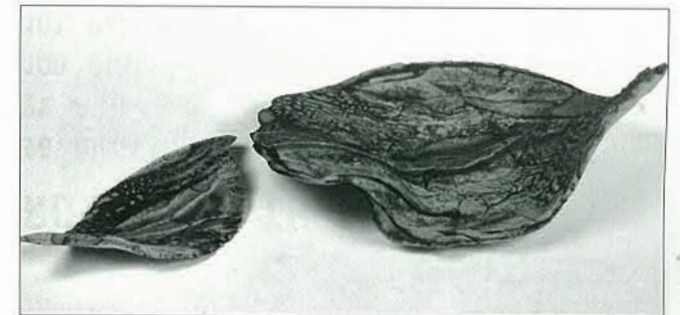
LINDA PRINGLE

76	E - Education by Repetition	\$1,200
77	A - Opportunity / Advantage	\$1,200
78	A - Transplanted Culture	\$1,200
79	N - Consequences / Planning	\$1,200



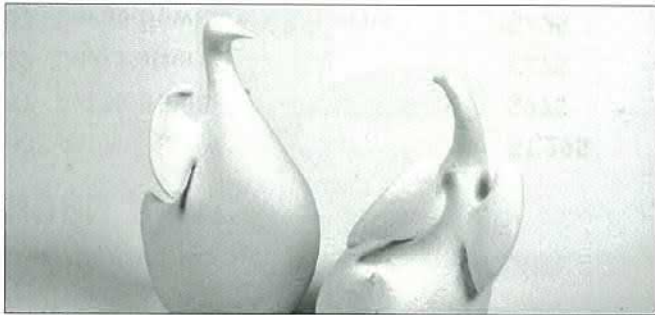
HUGH RICKARD

80	Aki No Kaze	\$1,295
81	Aki No Hibiki	\$975
82	Leaf Patterns	\$475
83	Large Bowl, Leaf Patterns	\$425
84	The Reef	\$595



MARGARET RYLEY

90	Fault Line - 2 piece	\$450
----	----------------------	-------



JOY SWAFFORD

91 Family Reunion	\$160
92 Family Reunion	\$160
93 Family Reunion	\$160
94 Who Does She Think She Is	\$125
95 Who Does She Think She Is	\$125



SUZANNE TALBOT

96 Swirl Tumblers - Set 4	\$120
97 Chubby Swirl Tumblers - pair	\$75



ROSEMARY THOMPSON

98 Bird	\$145
99 Bird	\$145
100 Bird	\$145
101 Pair of Birds	\$165
102 Pod Pot	\$48

14



PIP TRUMIC

108 Bowl	\$120
109 Bowl	\$80



KATE WALTON

110 White Cereal Bowl	\$45
111 White Cereal Bowl	\$45

15

ROSEMARY THOMPSON

103 Pod Pot	\$48
104 Pod Pot	\$48
105 Bird Vessel	\$190
106 Bird Vessel	\$160
107 Bird Vessel	\$210

CPA

We are a 47 year old association with 120 members in Christchurch and the Canterbury region. We are a sociable group interested in all aspects of ceramics, and we welcome members who wish to learn more about our craft. We offer pottery classes for adults during the school terms, and for young people during vacations. These classes, in which many Canterbury potters started off, cater for both experienced potters and absolute beginners. All classes are open to non-members.

Each year we present this regional exhibition in the

Canterbury Museum and during the year a variety of more social events like open days and outdoor firings. We have facilities for a wide range of ceramic techniques. These include three electric kilns a gas kiln, electric wheels, a four-inch extruder, pug mill, glaze spray booth and an extensive library, which includes a collection of videos.

POTTERY CLASSES FOR:

Absolute beginners
Experienced potters
Young people, after school
Special needs adults
School holiday programmes

Our workshop is set in the gardens of the Avice Hill Reserve at 395 Memorial Avenue.

For more information, phone (03) 358 9467 or check out our details online under Affiliated Clubs at www.nzpotters.com.

CPA

CANTERBURY POTTERS ASSOCIATION (INC.)

Avice Hill Reserve
395 Memorial Avenue
Christchurch
Phone (03) 358 9467

WWW.NZPOTTERS.COM

Petals on C

Fresh Flowers For All Occasions

- * Weddings
- * Events
- * Gifts
- * Plants
- * Corporate Arrangements
- * Free Delivery to ChCh Hospitals

ph : 03 960 7255
e : sales@floristnz.com
www.floristnz.com



Contact us for more info



ELECTRIC HEDGEHOG

LEANNE LASSMAN designer
spiny1@paradise.net.nz

T+F 03 9600800 c 021 2673885
po box 24235 christchurch 8642