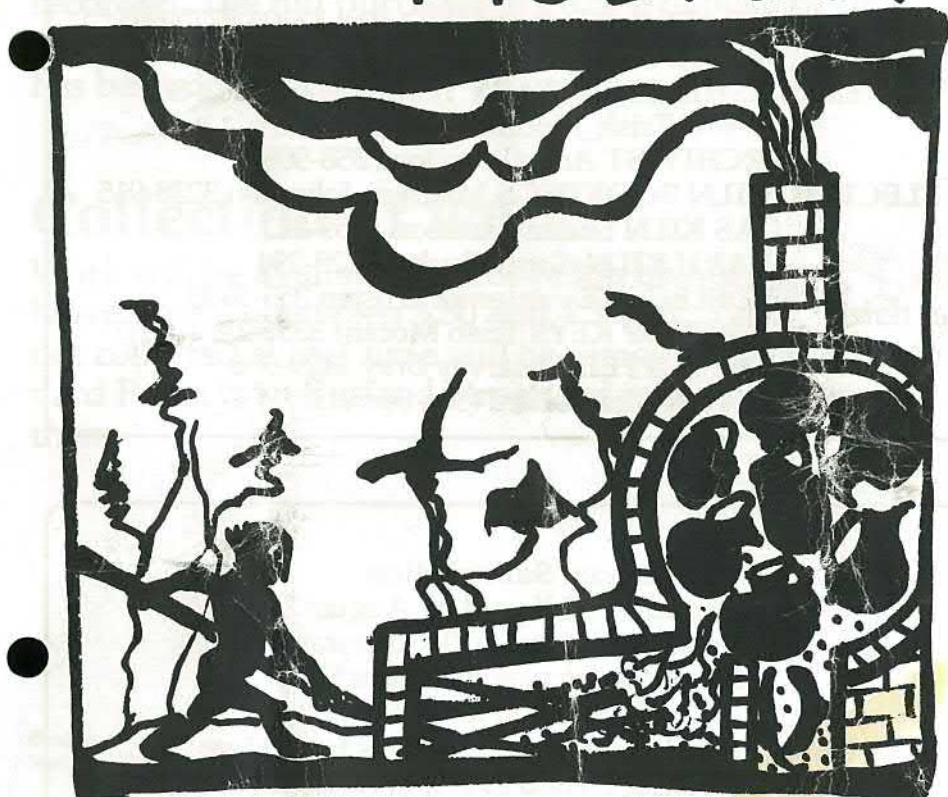


Oct 30 -
Nov 8
1999

CANTERBURY
POTTERS
ASSOCIATION (INC)

MILLENNIAL MUDFEST



EXHIBITION HALL CANTERBURY MUSEUM

The Canterbury Potters Association (Inc.)

AVICE HILL COMMUNITY RESERVE
395 MEMORIAL AVENUE, CHRISTCHURCH 4
PHONE 3589-467 (Answerphone except Thursday 11 - 1.30)
PRESIDENT Viv Smith 3520-404, *e-mail* vivs@crc.govt.nz
(after 7.30pm or at weekend please)
SECRETARY Jim Pollard 3587-943 Fax 3587-963
e-mail j.pollard@netaccess.co.nz
TREASURER Gordon Lidgard, P.O. Box 13200 3770-663
Fax 3770-623, *e-mail* gordon@nzbike.com
MEMBERSHIP SECRETARY Trish Morant 3552-804
e-mail Trish_Morant@stats.govt.nz
ARCHIVIST Anne Woollons 358-9090
ELECTRIC KILN BOOKINGS Maureen Johnston 3238-915
GAS KILN Shona Clarkson 3859-821
RAKU KILN Sarah Burley 3328-294
NZSP DELEGATE Frederika Ernsten 355-5933
WORKSHOP KEYS Trish Morant 3552804
CLAY SUPPLIES Harvey Bray 3429-376
EDITOR Jim Pollard (See Secretary)

Annual Subscription

Reduced by \$5 if paid by August 31
Individual \$45, Joint \$50, Corporate \$55
Joining fee for new members \$7.50

Workshop key \$5

Members at Home Day Thursdays from 11am
Committee Meeting second to last Wednesday in month

Adult Classes

Mon. 7-9, Tues. 9.30-11.30, Wed. 9.30-11.30, Thurs. 7-9

Tuition fee \$85 per 15 week term

Primary school holiday classes April, June, September

Opening night sales procedure

No work will be sold until Mr Moore has declared the exhibition open.

On the edge of each exhibition stand are small grey sales cards, which bear numbers corresponding to the numbers of the works on that stand. To purchase a work remove the corresponding grey sales card and take it immediately to the Sales Desk where your purchase will be recorded. The full purchase price or a deposit of 10% is required. Do not remove sales cards until the exhibition has been declared open.

Collection of work

Work will be available for collection on Sunday November 7, between 3.30 and 4.30pm. Work which is not collected at that time will be removed to the Courtyard Pottery, 75 Rutland Street and may be collected there.

Posters

Margaret Ryley & Anne Woollens

Selectors

Frederika Ernsten & Vivienne Smith

Designers

Frederika Ernsten, Margaret Ryley & Vivienne Smith

Catalogue

Jim Pollard & Margaret Ryley

Phyl Barr

- | | |
|--------------------|------|
| 1. Serving platter | \$75 |
| 2. Serving platter | \$65 |

Kumiko Black

- | | |
|----------------------------|-------|
| 3. Three handled vase | \$130 |
| 4. Blue-green vase | \$95 |
| 5. Set of lined mugs | \$90 |
| 6. Small decorative teapot | \$80 |

Harvey Bray

- | | |
|-------------------------|-------|
| 7. Pair of candlesticks | \$120 |
|-------------------------|-------|

David Brokenshire

- | | |
|----------------|-------|
| 8. Flame dance | \$185 |
| 9. Bowl No. 1 | \$125 |
| 10. Bowl No. 2 | \$125 |
| 11. Bowl No. 3 | \$95 |
| 12. Bowl No. 4 | \$95 |
| 13. Bowl No. 5 | \$75 |

Shona Clarkson

- | | |
|-------------|------|
| 14. Aquatic | \$95 |
| 15. Aquatic | \$95 |
| 16. Aquatic | \$70 |

Sally Connolly

- | | |
|--------------------------|-------|
| 17. Copper slab pot | \$50 |
| 18. Yellow slab pot | \$45 |
| 19. Blue slab pot | \$40 |
| 20. Dysfunctional teapot | \$45 |
| 21. Dysfunctional teapot | \$40 |
| 22. White cat | \$120 |
| 23. White cat | \$75 |
| 24. White cat | \$50 |

Frederika Ernten

- | | |
|----------|-------|
| 25. Vase | \$650 |
| 26. Vase | \$450 |
| 27. Vase | \$220 |
| 28. Vase | \$180 |
| 29. Vase | \$160 |
| 30. Bowl | \$85 |
| 31. Bowl | \$52 |
| 32. Bowl | \$38 |

Terry Gallie

- | | |
|---------------------------|-------|
| 33. Set of six rice bowls | \$120 |
|---------------------------|-------|

Neil Hey

- | | |
|-----------------------------------|-------|
| 34. Pasta on my platter | \$94 |
| 35. Pasta on my bowl | \$86 |
| 36. Pasta on my bowls; set of two | \$64 |
| 37. Symphony in copper | \$86 |
| 38. Symphony in copper | \$42 |
| 39. Symphony in copper | \$148 |

Verna Hoskins

- | | |
|-----------------------------|-------|
| 40. Blue mist candle holder | \$110 |
|-----------------------------|-------|

41. Blue mist vase	\$65
42. Blue mist vase	\$65
43. A little bit potty	\$50
44. A little bit potty	\$48
45. A little bit potty	\$48

Chris James-Blacklock

46. Set of six goblets	\$95
47. Bowl	\$65
48. Bowl	\$45
49. Bowl	\$30
50. Bowl	\$30

Maureen & Murray Johnston

51. Turquoise jug	\$75
52. Turquoise jar	\$110
53. Turquoise jar	\$110
54. Blue jar	\$110
55. Pair of seahorses	\$70
56. Angel fish	\$35
57. Hand formed blowfish	\$45
58. Large seahorse	\$85

Gordon Lidgard

59. Twisted fire sticks	\$288
-------------------------	-------

Jan MacPherson

60. Plate and stand	\$135
61. Stemmed bowl	\$78
62. Stemmed bowl	\$78
63. Stemmed bowl	\$78
64. Set of three bowls	\$62
65. Serving dish	\$55

Joy McKelvey

66. Jug I	\$57
67. Jug II	\$43
68. Wood fired pot	\$45

Seiji Mijajima

69. Samurai	\$180
70. Shoulder I	\$180
71. Shoulder II	\$180
72. Shoulder III	\$180
73. Shoulder IV	\$150
74. Vase	\$150

Trish Morant

75. The Dimples; set of three	\$150
76. Raku vessel	\$80
77. Raku vessel	\$70
78. Raku vessel	\$60

Gaye Morton

82. Set of four cups and saucers	\$65
83. Bowl	\$20
84. Bowl	\$20
85. Bowl	\$20
86. Bowl	\$20

Chiine Okada-Dewar

87. Triangle Box II	\$75
88. Triangle Box III	\$90
89. Triangle Box IV	NFS
90. Set of three Boxes	\$90
91. Set of six Blue Bowls	\$112

Kathy O'Neill

92. <i>Miltiades</i> helmet and stand	\$135
93. <i>Corinthian style</i> helmet and stand	\$135

Suzanne O'Shannessey

94. Millennium Sunset raku bottle	\$70
95. Millennium Sunset Raku Bottle	\$65
96. Millennium Sunset Raku Bottle	\$65
97. Millennium Sunset Raku Bottle	\$60

Linda Pringle

98. Shoreline vessel	\$145
99. Shoreline vessel	\$100
100. Shoreline vessel	\$115
101. Shoreline vessel	\$70
102. Shoreline vessel	\$70
103. Couplet; set of two	\$80
104. Trieste; set of three	\$90
105 Uno	\$35

Robyn Russell

106. Sushi	\$48
107. Sushi	\$40
108. Sushi	\$36
109. Lemon bowl	\$48
110. Lemon bowl	\$38

Margaret Ryley

111. The Strand 1	\$680
112. The Strand 2	\$480
113. The Strand 3	\$280
114. The Strand 4	\$280

Hirome Stewart

115. Zebra dish	\$70
116. Zebra dish	\$40
117. Ginkgo bowl	\$65
118. Ginkgobowl	\$60
119. Ginkgo bowl	\$58
120. Shinsya bowl	\$60

Beryl Sweet

121. Bowl	\$80
-----------	------

Rosemary Thompson

122. Last year in Mustang	\$60
123. Last year in Mustang	\$60
124. Last year in Mustang	\$50
125. Last year in Mustang	\$50
126. Last year in Mustang	\$50
127. Last year in Mustang	\$50
128. Last year in Mustang	\$50
129. Last year in Mustang	\$50

Anne Woollons

130. Rural bloke	\$95
131. Rural bloke	\$95
132. City suit	\$95
133. Flasher	\$85
134. Adress	\$85

China Painting **Pottery** Hobby Ceramics

New Zealand's

COMPLETE SUPPLIER

KILNS * CLAY * GLAZES & MATERIALS * BULK SUPPLIES

KILN FURNITURE * WHEELS * AIR BRUSHES

SPRAY GUNS * COMPRESSORS * LOW FIRE GLAZES

ONGLAZES * LUSTRES * STAINS

CHINA PAINTING SUPPLIES * COPPER ENAMELLING

KILN ELEMENT SERVICE * FIRING SERVICE

ADVICE, SERVICE, MAIL ORDER

Gare Glazes

COBCRAFT

24 ESSEX STREET, CHRISTCHURCH

P. O. Box 32024 PH(03)3667229 FAX (03)3666847

Kiln Element Design and Manufacture

- Elements for all types of kilns wound to your requirements•
 - Prompt and efficient service•
 - Full records kept for replacement orders•
 - We use and recommend Kanthal resistance wire
- Don't wait for an element burnout - keep a spare set on hand

Argus Heating Ltd.

411 Tuam Street, Christchurch

Telephone 381-0768 Fax: 381-0968

Contact the factory manager

Brian Shaw

e-mail argus@argusheating.co.nz

The Canterbury Potters Association (Inc.)

We are a thirty six year old association with about 130 members in Christchurch and the rest of Canterbury. We are a sociable group, interested in all aspects of pottery, and we welcome members who wish to learn more about our craft.

Our workshop is set among the of the Avic Hill Reserve at 3905 Memorial Avenue and we are open to the public every Thursday from 11 to 1.30.

We offer pottery classes for adults in during the school terms and for young people after school and in the vacations. These classes, in which many Canterbury potters started off, cater for both experienced potters and absolute beginners. All the classes are open to non-members.

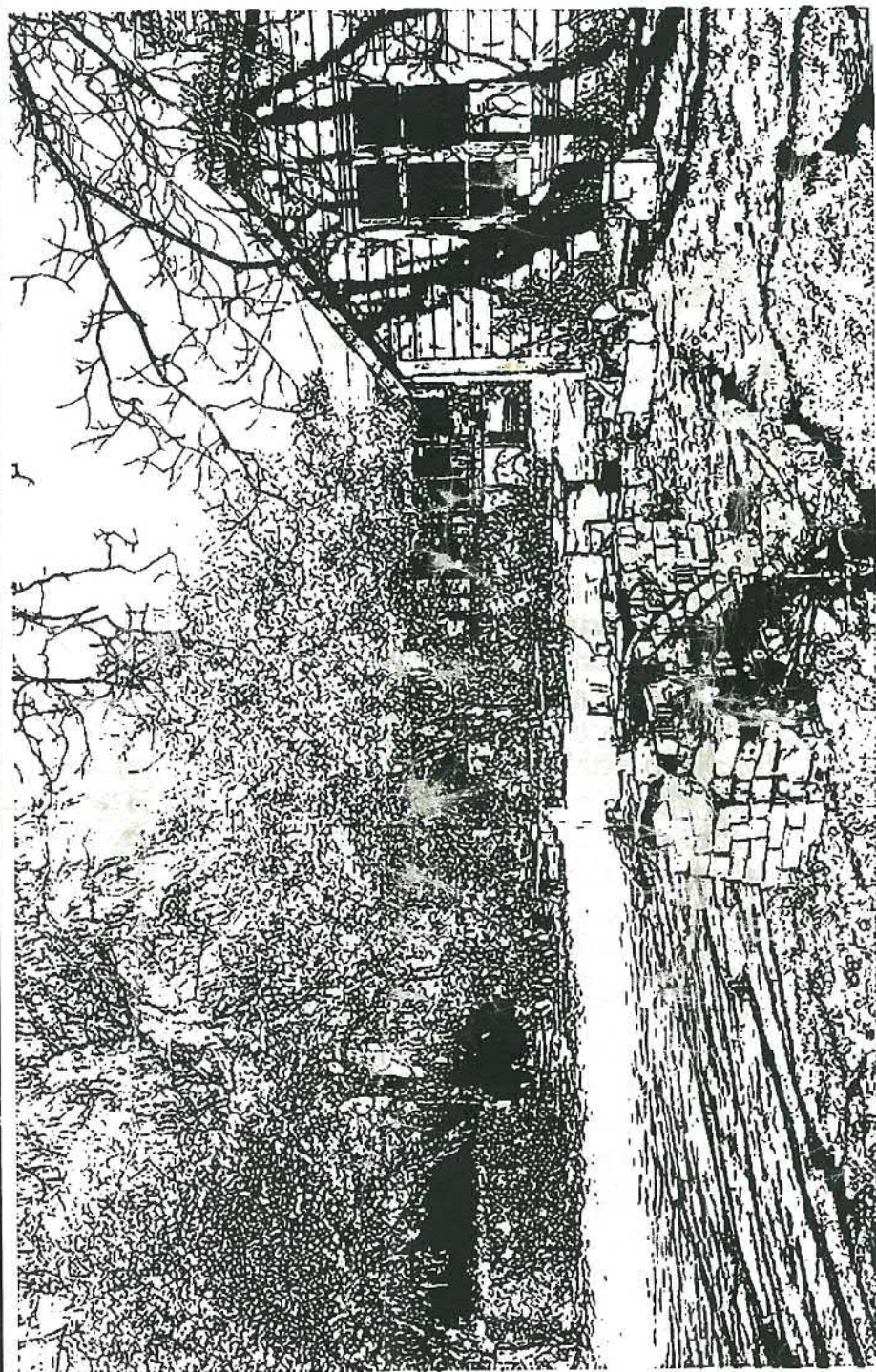
Each year we present this regional exhibition in the Canterbury museum and during the year a variety of more social events like our outdoor raku firings.

We have facilities for a wide range of pottery techniques. These include two electric kilns, gas kiln, electric and kick wheels, a four inch extruder, glaze spray booth, and an extensive library which includes a collection of videos. The technical facilities are available to members on payment of a small annual fee which entitles them to a key to our workshop.

During the year we offer meetings on specialist topics and present hands-on and demonstration workshops by New Zealand and overseas potters. In February 2000 we will host a workshop from dynamic young Auckland potter, Phillip Luxton., This visit is organised by the New Zealand Society of Potters and supported by Creative New Zealand.

We publish a lively monthly newsletter, *The Canterbury Potter*, with information about coming events and articles of technical and general interest.

Membership of the Association is open to all who wish to learn about pottery. If you wish to know more about membership or our classes, ring Frederika Ernten, 3555-933.



Canterbury Potters at the Avic Hill Reserve